

# HI-VIS PARKA TRAFFIC



## DESCRIPTION

- High Visibility Waterproof Hooded Parka
- Made from outer Canvas waterproof fabric, a smooth inner lining and quilted padding for reliable thermal comfort, taped seams that prevent water leaks, includes two sewn reflective tapes on sleeves, torso and back for added safety. Garment certified as a High Visibility Category II PPE, Class 3 for single-colour models and Class 1 for two-tone models, Protection against Cold Environments, Class 3-x-x-x and Protection against Rain, Class 1-1-x: based on 13688, 20471, 14058 and 343 standards, 25 washes maximum lifetime
- Fleece-lined stand-up collar, full-zip fastening with storm flap and hook-and-loop closure, retractable hood and double cuffs with inner elastic for a secure fit
- Two slanted fleece-lined pockets and an inner pocket, all zipped for a secure storage, and extra warmth. Includes an inside back zip for easy marking, compatible with screen printing, heat transfer, embroidery, stitching

Material composition and packaging details:

- PCS X BOX: 10
- PCS X BAG: 1
- EXTERIOR: POLYESTER 90%, POLYURETHANE 10%
- INTERIOR: POLYESTER 100%, DENSITY 250 g/m<sup>2</sup>

Material for workwear and uniforms.

## CHARACTERISTICS

Key characteristics and certifications:

- EXTRA THERM
- WP GARMENT
- THERMO S.
- 14058\_1
- 20471-1 BI
- 20471-3 MO
- 343-1

## APPROXIMATE DIMENSIONS PER SIZE (CM.)

SIZES	ADULT					LARGE
	S	M	L	XL	XXL	
LENGTH	74	77	80	83	86	89
WIDTH	58	61	64	67	70	73

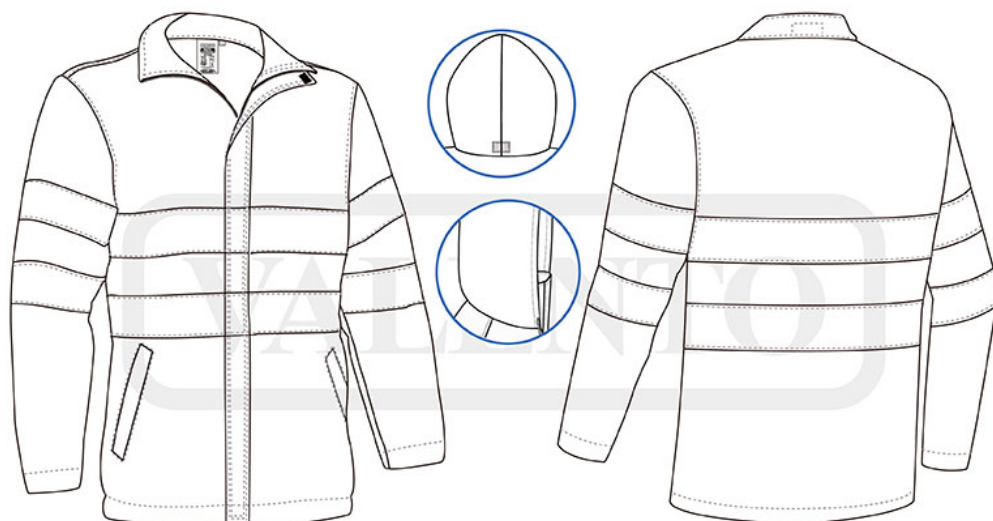
## COLOURS

Available colours for big Available colours for adult

Available color options for the parka:

- fluo yellow
- fluo orange
- fluo yellow-apple green
- fluo yellow-amazon green
- fluo yellow-green bottle
- fluo yellow-lotto red
- fluo yellow-mahogany garnet
- fluo yellow-bluish blue
- fluo yellow-orion navy blue
- fluo yellow-charcoal grey
- fluo yellow-black
- fluo orange-orion navy blue

Garments containing different colours must be washed with care, in cold water, using a suitable laundry detergent and drying immediately after washing.



## DETAILS

---



*Back part*